

# GNLCC Advisory Team Meeting Notes

*June 3, 2010*  
*West Yellowstone, Montana*

The following short report provides documentation of the meeting of the Great Northern LCC Advisory Team on Jun 3<sup>rd</sup> and 4<sup>th</sup>, 2010. The meeting was held at the Three Bears Hotel and conference facility, West Yellowstone, Montana. This report focuses on key outcomes of the meeting such as action items and diagrams created during the meeting. A full set of running notes from the meeting are available from the facilitator, Scott Bischke ([scott@emountainworks.com](mailto:scott@emountainworks.com)).



<b>Attendance .....</b>	<b>1</b>
<b>Summary of Action Items Developed During the Meeting .....</b>	<b>2</b>
<b>Key Concerns Stated at This Meeting .....</b>	<b>3</b>
<b>Agenda Framework for Upcoming GNLCC Meetings .....</b>	<b>3</b>
June 21 telecon .....	3
AT meet Sep 27-29 (noon to noon; location TBD—Cody?) .....	3
October 21/22 SC meeting in Boise .....	3
<b>FY10 Funding.....</b>	<b>3</b>
<b>AT Roles and SC Governance .....</b>	<b>4</b>
Advisory Team roles and responsibilities.....	4
SC Governance .....	5
<b>Near- and Long-term Strategy.....</b>	<b>6</b>
FWS/DOI FY10 Performance Measures .....	6
Setting LCC Objectives and Priorities .....	6
Tribal, provincial engagement / outreach .....	6
GNLCC Personnel Capacity.....	6
<b>Discussion of Data Management / Data Platform Development .....</b>	<b>7</b>
<b>Discussion of Potential Hopa Mountain NSF Grant.....</b>	<b>8</b>
<b>June 3 / 4 Agenda.....</b>	<b>9</b>
<b>Partial List of Acronyms.....</b>	<b>10</b>

## ATTENDANCE

### Present

1. Steve Waste
2. Greg Hughes
3. Tom Olliff
4. Greg Watson
5. Rick Sojda
6. Yvette Converse
7. David Wood (arrives after lunch day 1)

8. Jeff Kershner (day 2, only)
9. Scott Bischke, facilitator/note taker

### Absent

10. Greg Servheen
11. Jim Morrison

<< Of note: the AT has an open invitation to the SC to add more members to the AT >>

**SUMMARY OF ACTION ITEMS DEVELOPED DURING THE MEETING**

	<b>Who</b>	<b>What?</b>	<b>By when?</b>
1	x SB	add web address of DOI vision statement in note for this meeting	Jun 9
2	AT	Develop guidance on how the LCC becomes part of outcome based objectives	?
3	TO	contact Kirsten Leong about social science meeting in Aug, convey to AT	ASAP
4	x YC	send LCC coordinators meeting report to group, including recommendations that were developed and send to this group	ASAP
5	AT	Develop concept of survey to determine a) priority assessment / areas of mutual interest; and b) AC audience	For presentation to SC Jun 21
6	AT	determine how eco-forums are formed and organized	?
7	GH	Connect with Steve Z to determine if FWS Region 1 funding is available and if so allocate (potentially driven by regional directors)	To CGS by Jul 1
8	AT	Funding allocation to selected projects	To CGS by Jul 1
9	RS, GH, TO, YC	Write SOW for projects that funds were allocated to; see table in notes for assignments; all SOWs will be sent to YC as the “keeper”—she will supply them to FWS contract officer	By Jun 18
10	YC	Determine if there is a std format for SOW and send findings to AT; check with Jody Miller	By Jun 7
11	YC	Provide examples to AT of models of multi-agency groups where full time dedicated staff work for another agency (e.g., JV)	?
12	x SB	Send GH pdf of SC members only for sharing with tribal contacts	Jun 7
13	SB	Repost GNLCC website; include posting to DOI climate change strategy website	Jun 11
14	YC	Send reminder to SC re: Jun21 telecon	Mid-June
15	YC	Develop a standalone website (public) for the GNLCC; host on NPS or USGS or USFWS public sites; expect to work with Suzanna Carrithers at USGS	ASAP
16	YC (SG)	Send memo to SC regarding allocation of additional \$250 k Region 6 + ?\$s from Region 1	Jun 11
17	AT	Communication: do a newsletter, email posting, or similar providing an update on the status of the GNLCC to the SC say every month or 6 weeks	?
18	AT	Agreement from here forward to begin using DOI vision and SC agreed upon goal	On Website, etc
19	YC, DW	Confer at Park City, UT during upcoming ___ meeting about why BLM (or others) might come to the GNLCC: 1) Repost of data layers, 2) Source of climate data and modeling, 3) Source for peer review, 4) Statistical assistance for designing AM on the ground, 5) Monitoring, 6) Data management. An opportunity to build bridges—see slide 24 in Apr 21 AT talk—possibly exists with BLM given their current I&M status. Since BLM may not be best suited for this work, consider that I&M might come from the GNLCC. Similarly, if BLM has pot of \$ to do CC they can “chip in” to help meet LCC goals and outcomes that all partners can use. (one partnering idea: if you put your data in you can draw all data out).	?
20	GW	Send Tim data platform email and Bob Crabtree email on RRSC to SF, YC, RS, JK	Jun 11
21	RS	Meet with Sean Finn re: ArcServer program	Jun 11
22	Sean Finn	Connect with Tim Kern to restart program	Jun 11
23	GW, JK	Determine if peripherals are needed (may come from RS, SF, Marty, etc)	?
25	YC	Send this UI email to RS and JK for them to review, also talk with Todd Kipfer about data storage	Jun 11
26	AT	Guidance to JK on duties (website, communication and data products, etc that AT would like from Suzanna and Leslie)	?
27	GH, YC, DW	Develop a tribal interaction plan. Potential ideas: work with HOPA Mountain, make use of existing Columbia Basin relationships, start with existing FWS outreach plan; recognize that in the upper Missouri Basin good relationships exist with CKST (on SC), BLACKFEET, Nez Perce tribes, and others. DW to meet with BLM tribal liaison coming on this summer	Over next 6 months
28	JK, SG	Engage with provinces beginning with meeting provincial reps at IGBC meeting in Whitefish and then at CMP meeting in Waterton in September	As described
29	DW, YC	Develop descriptions showing commonalities for 6 theme areas.	Before Sep meeting
30	AT	Monthly call to plan SC meeting in Oct, being following Jun21 telecon	Begin in July
31	YC	Create Doodle to set meeting dates until Oct 21 (try to get GregS, JimM)	Jun 11
32	AT	Write the long term strategy in next 6-8 months (by Dec 31)	By 12/31/10

## KEY CONCERNS STATED AT THIS MEETING

---

1. Concern from the AT as a whole
  - a. about determining the GNLCC vision. There was recognition that the SC Apr 21 guidance provided a goal for the GNLCC, not really a vision. The AT reviewed the DOI vision for LCCs and CSC found at <http://www.doi.gov/whatwedo/climate/strategy/loader.cfm?csModule=security/getfile&PageID=23288> and how discussed how to interpret it, especially how to define interaction between CSC and LCCs. CSCs appear long term and research focused; LCCs appear more short term, large scale, and tactically focused. The AT determined after much review that they preferred to use the DOI vision for the LCCs (URL just provided) as a visioning source than Secretarial Order 3298 (<http://www.fws.gov/science/shc/pdf/SecOrder3289b.pdf> ; note third paragraph) as the latter is a bit climate-centric for the LCCs. Then the Apr 21 “vision” becomes the GNLCC goal.
2. Concerns from Rick
  - a. How does USGS participate? Seems to be through CSCs only.
  - b. Some projects will be on-going or finishing up. Need to recognize some transition time for LCC staff.
  - c. Consider that we may have mostly a FWS vision for the GNLCC now as witnessed by the funded projects
3. Concerns from Yvette
  - a. The full AT needs to buy into the vision of the GNLCC or group will fail
  - b. The AT, SC need to move past the idea that we don’t know what we are doing, that we don’t have a vision. We do and it is clearly stated. We need to begin to be strong in pointing that fact out.

## AGENDA FRAMEWORK FOR UPCOMING GNLCC MEETINGS

---

### June 21 telecon

1. TO: focus = governance
2. RS: Request for SC endorsement of method to analyze/extract existing plans for common objectives (e.g., SWAPs, BLM, NPS, USFS, tribal, provincial). Need SC to give the charge to AT to frame LCC objectives; **need a process by which this team would draft some commonalities to frame objectives**; this is step one in creating a long-term strategy.
3. GW or SG: update on 2010 funding selections
4. ???: Present concept of survey to determine GNLCC audience and ask for agreement to pursue
5. ???: ask the SC to address role and function of CSC vs LCCs
6. ???: ask the SC to review the DOI plan for the LCCs (use this not Secretarial Order 3289) and provide feedback if with respect to the GNLCC there is more clarity needed on a) the vision for the broader LCC program, and b) the GNLCC goal they agreed upon April 22. Whether no (ok as is) or yes (make these modifications) begin moving forward with the idea that the GNLCC has a solid vision and goal.
7. ~~SW: Possible slight reset of GNLCC visioning work—using DOI vision (see website just above) and SC agreed upon goal to describe GNLCC purpose; possibly add SW ideas (see Action Item 2)~~

### AT meet Sep 27-29 (noon to noon; location TBD—Cody?)

Goal of meeting: to document GNLCC performance and write year 1 report against performance measures (both individual and collective efforts). This document to be completed by Oct 1, 2010. Sometime during the meeting will also set aside to prepare for the October 21 SC meeting.

### October 21/22 SC meeting in Boise

1. *Survey results*—Present results of survey described in June 21 telecon regarding GNLCC a) priority assessment / areas of mutual interest; and b) AC audience (state directors, field mgrs, both, other? Who will use the tools and information developed by the GNLCC?)
2. *Staffing status*—e.g., recognized need to hire Spatial analyst might be 3-6 months out
3. *How to Convene Eco-regional Forums*: Potential to use NGOs or RFP process to convene

## FY10 FUNDING

---

A project list from Greg Watson was presented showing projects that will be funding based on the outcome of the rating process completed in May, plus projects that are already underway via FWS funding. Some newly released funds—from region 1 and/or region 6 FWS—may become available to the GNLCC for research programs. The AT discussed how those funds might be most equitably distributed. Using guidance from the SC that distribution is expected to occur, principally by adding to the pots of those already accepted (no color in chart below) to bring

them up to their originally requested levels and/or to fund the next projects below the cutoff line during the May RFP review (these shown in yellows below). No final decision was made on actual \$s, thus the chart below was not filled in.

The GNLCC needs to obligate these funds by end of fiscal year. To do so, the AT will write scopes of work for the selected projects (see action item list) as a first step toward contracting. Leads for SOW writing are shown in the table below and this item is reflected in the action item list.

*Funding discussion for GNLCC research projects*

Lead proposal author	USFWS funding		lead of SOW writing	to get SOW done
	Original \$	New \$ after 6/3 review		
	<b>1088</b>			<b>3=hard, 2=med, 1=eZ</b>
McAllister	250		YC, GH	3
G Servheen	125		YC	1
Knick et al	56		RS, YC	2
Olliff/Converse	25		TO (talk w YC)	2
Muhlfield et al	0		JK	3
<b>Robb et al</b>	<b>60</b>		YC	1
C Servheen	127		YC	1
Mclvor	75		GH	2
Bonn	100		RS	1
<b>Connelly et al</b>	<b>130</b>		SW, GH	1
<b>Whiteman et al</b>	<b>140</b>		YC	1

**AT ROLES AND SC GOVERNANCE**

**Advisory Team roles and responsibilities**

The AT discussed the need for a charter or MOU and decided that there was no such immediate need. Instead they felt that first they want to have the SC set the governance model (see below) "in stone first".

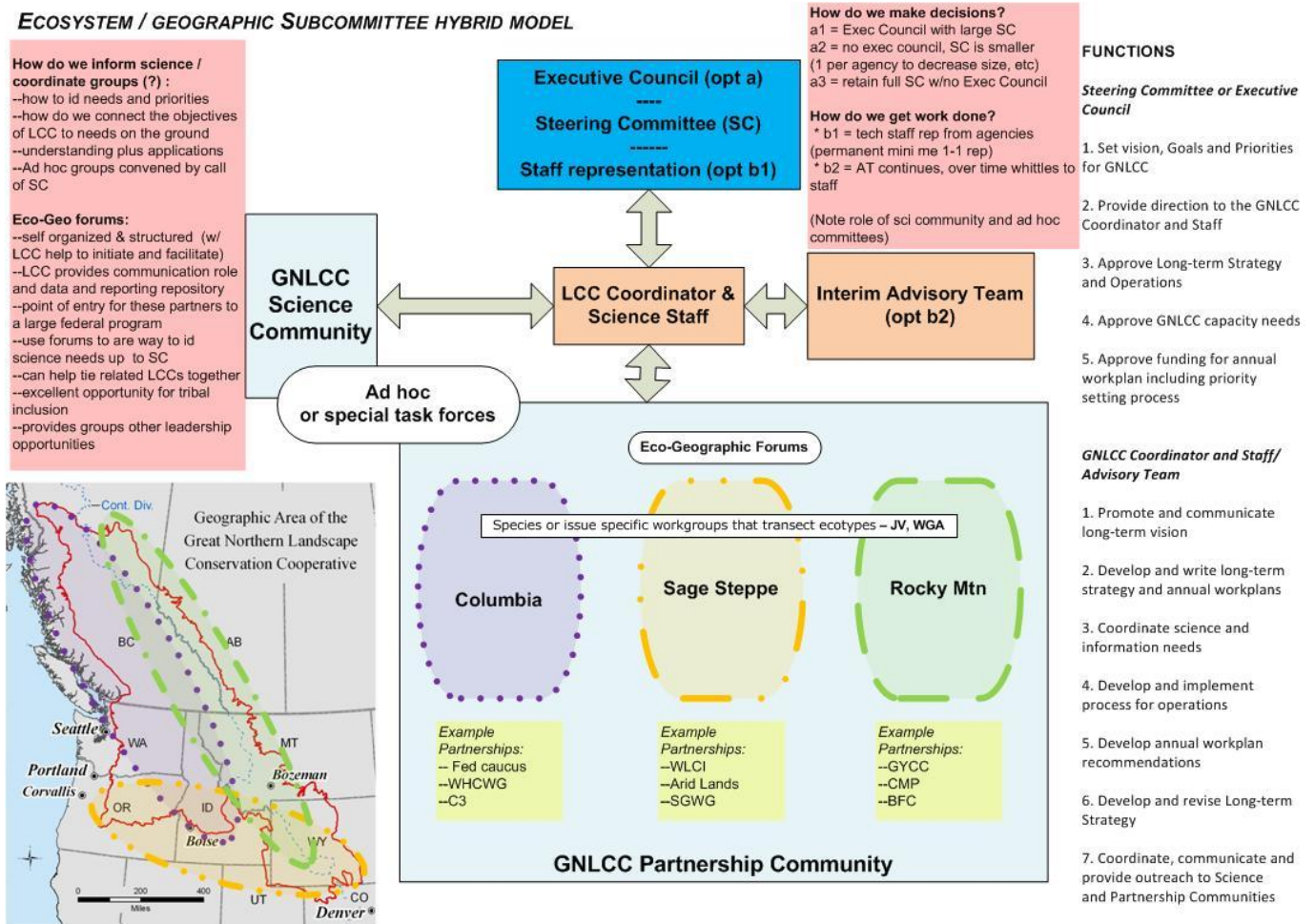
The AT completed an exercise defining roles and responsibility of each team member, especially LCC staff, with a focus on the next 6 month timeframe:

1. Administrative
  - COORDINATOR Data calls internally for budget, WO
  - COORD W/DELEGATION Keeping track of documents
  - SCI-COORD Tracking science products
  - COORDINATOR Oversee/manage staff or helpers or contractors (concern with those that are not invested in the LCC)
  - COORDINATOR Inter- and intra-LCC coordination
  - SCI-COORD, COORD Contracting and tracking LCC funded projects
  - CLC Acquisition of permanent staff
2. Communication and outreach (need a mailing list)
  - COORDS (= ADD NPS), ALL Giving presentations
  - ALL Attending meetings
  - COORDS More formal GNLCC website (e.g., Suzanna at NoRock)
  - COORDS Regular updates to SC
  - OUT Spatial information (e.g., maps, GIS but not analysis for science need; visual information for sharing/presentations)
  - COORDS, ALL, EXISTING Tribal outreach and coordination
3. Serving Steering Committee
  - AT Crafting foundational documents for the LCC
    - Objective setting and goal setting
    - Landscape/wildlife planning analysis (e.g., SWAP)

- AT Developing vision
- COORDS Setting up SC meetings (agenda, location etc)
- 4. COORDS & AT Coordinating/convening eco-geographic forums
  - Columbia
  - Sage Steppe
  - Rocky Mountain
- 5. SCI-COORD Coordinating with the Science Community (e.g., interacting with CSCs)
- 6. SCI-COORD, COORDS Coordinating with local land managers
- 7. COORDS Coordinating with tribal entities and Provinces
- 8. COORDS Engaging/coordination with NGO communities
- 9. ADHOC COMM, SCI-COORD Data base development
  - Data platform management
  - Integration of I&M (NPS, NWRS, and others)
  - Integration of landscape analysis efforts (e.g., NPScape)
  - Hardware, software, staff
- 10. SCI-COORD Services and products (*this may not occur in the next 6 months*)
  - Decision support
  - Spatial and statistical analysis
  - Interactive data repository

**SC Governance**

The AT spent a good deal of time discussing and revamping the potential GNLCC governance structure they created on April 22<sup>nd</sup>. The results of those discussions are captured in the notes (shown with pink background) added to the diagram below. Key questions, and how the group recommends answering them, are reflected in those notes.



**FWS/DOI FY10 Performance Measures**

The AT recognized that there are performance measures that the GNLCC will be judged against (e.g., FWS/DOI FY10 Performance Measures—see Green Book measures and GW-supplied spreadsheet). Greg noted that the Green Book shows performance goals as expected by Congress that all agencies expected to meet.

Thus a separate AT meeting was scheduled for Sep 27-29 (see upcoming meeting section) to write a year-end report that demonstrates how the efforts of the GNLCC, including projects funded, meet the required performance goals. This report would generally be expected to be completed by the end of each fiscal year. However, since the final GNLCC objectives will not be set until after the Oct 21/22 SC meeting, the AT set six weeks after that meeting (i.e., ~ Dec 3) as the target for Year 1 report completion.

Jeff stated that ultimately the AT create a report that serves all masters, then create a template that can be used each year. The AT agreed and stated they envisioned writing one enabling document with possibly tear off sheets for the plan each year. Long term strategy for the Platte was 132 pgs; for upper CO they went the other way = shorter with appendices that address specifics

Tom stated a goal that the AT agreed with: The GNLCC's goal should be to be the group that DOI parades to hill to show excellent cooperation. Tom noted that the Year 1 report is a good place to begin showing that such cooperation is already happening.

**Setting LCC Objectives and Priorities**

The AT recognized that they need a starting point and brainstormed potential methods/tools to use to frame objectives, including SWAPs, NFHAP partnerships, ESAs, recovery plans, waterfowl mgmt plans, PIF (Partners in Flight), USFS sensitive species list, TNC (ecoregional assessments) and other NGO input, BLM sensitive species list; Columbia Basin Tribal first foods effort, Canadian resources (?).

One advantage to using all these documents would be a) demonstration of cross LCC integration (common issues), and b) application of LCC to more than just wildlife. However, the AT recognized that this is an onerous list to cover given the short time (~3 months) available. Thus the AT created the following strategy:

*Recognizing the need for a place to start, the short timeframe available, and the direction already given by the SC to work with State Wildlife Action Plans (SWAPs), the AT recommends a two phase approach. Phase I: Focus on species using existing SWAPs and FWS analysis on federal trust species already completed. Phase II: Add habitat, resource issues, cultural heritage, and other critical issues. Request SC deliberation on Phase I at the October 21/22 SC meeting, and direction for tackling Phase II.*

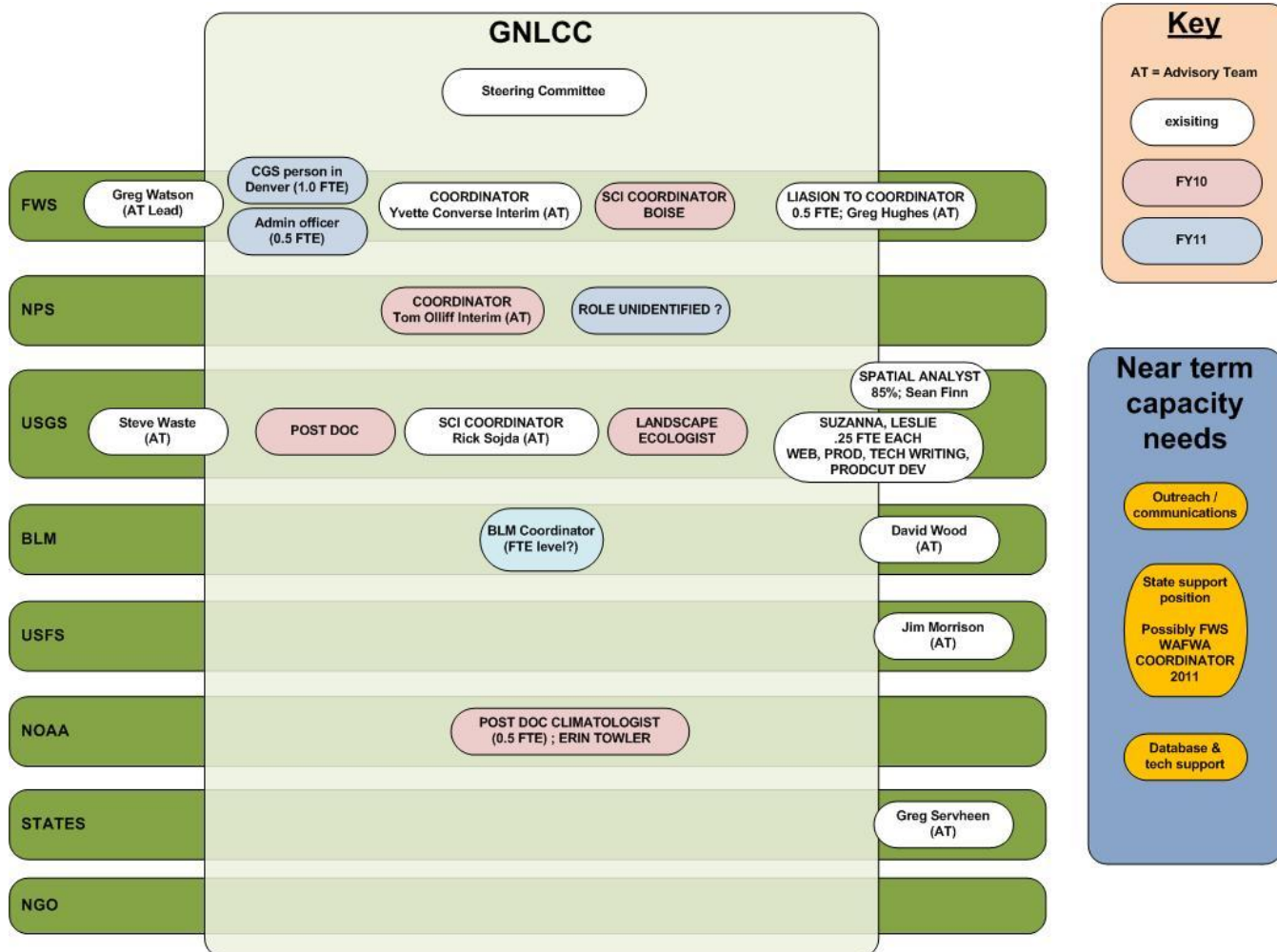
For Phase II, the AT noted that a great spreadsheet exercise (possible contract with NGO, university, or private contractor) would be to look at the overlap in all these programs (see above, SWAPs, NFHAP, etc). The analysis would consider breakout of species, habitat, resource issues, cultural heritage within the 6 themes the SC provided.

**Tribal, provincial engagement / outreach**

Methods for tribal and provincial engagement were discussed and turned into action items 27 and 28.

**GNLCC Personnel Capacity**

The AT discussed staffing needs for 2010, 2011, and beyond. They created a organization chart to depict those needs, as shown below.



## DISCUSSION OF DATA MANAGEMENT / DATA PLATFORM DEVELOPMENT

The AT held a ~30 min telecon with Sean Finn to discuss possible methods of data management. Highlights of the discussion are provided below:

- Tim Kern Working on ArcServer GIS; functionally it is working well and has been proven in WY? Project
- Perfect because you can enter data from remote locations
- Platform ready to go at a beta basis
- Good timing w/r to LCC need/desire to share info
- Need to set up user base, authentication, etc
- Talked with YC and Greg Servheen—idea of setting up a project in beta? GW—yes idea of possibly a range distribution for DSS across state boundaries, multispecies assessment
- Yes this project would be perfect controlled package with existing data, etc, to do as a test case; good scope and research/project for pilot
- Next step is to get folks linked with Tim
- Greg Servheen open to the idea of such a project; likely need WebX demo and some assurance that platform is stable; way to do this is to get all right people together (since project will be run over the Internet the demo could be done that way; want folks to enter data, see demo
- YC—not sure that Tim is working on this project since SF and YC talked with him; SF agrees
- GW—want Bob Crabtree and Tim to work on plugging some TOPS data into the ArcServer
- \*\* GW—will send emails from Tim email on data platform and Bob C email on RRSC to SF, YC, RS, JK
- GW—requests thoughts of Rick and YC on availability to work on developing data platform

- SF—(responding to RS ?s)Greg S currently likely doesn't know how data management will be handled; in ID spatial data is handled thru GIS hub for Idaho F&G (other agencies possibly not as well organized); they have good (inside Idaho) method for static data delivery; IDF&G can credential data to secure it; by and large delivered and managed on the data end; thus some data mgmt at each Partner level
- SF—no contact previously with NASA TOPS folks nor with NASA TOPS
- DW—what sort of front end? SF—set up communities based on research or mgmt topics; at each community can set data security; usually if you are a member of the community you can add and have access to the data (and models, etc)
- DW—can general public use; SF—no this is an analytical tool not data deliver \*but\* there are elements of ArcServer that can produce static maps (even some small analytics); DW—wants the public to see some of the basic data; notes State of MT CAP system
- GW—don't want to critique MT CAP system but very excited about new idea
- RS—serving to the public via WLCI is a nice attribute that Tim is doing
- DW—want this to interface with BLM work also
- \*\* RS meet with Sean Finn re: ArcServer program
- \*\* SF will connect with Tim to restart program
- GW will look to Rick and Sean to manage this database on behalf of the GNLCC—Rick = yes, Sean says yes but should clarify with Marty and/or Sue
- TO—want to fold NPScape etc into the fold for populating database
- SF—agreed; framework data is out there and easily available but value has been added to the data that is where the community can be exposed (and can expose) to other in the community; helps folks all be using the most up to date data at any one time
- JK—working with OSU and MSU for data hosting; OSU first, have two servers talking across T3 line; yes NoRock will host; possibly no additional costs since recent proposal will house; planning to buy Terrabytes of data; no talk yet about peripherals
- \*\* GW, JK—will determine if peripherals are needed (may come from RS, SF, Marty, etc)
- YC—Jeff have you had discussion with UI folks? They have some big infrastructure for data mgmt and would like to help. Jeff says Sean sits at UI and may have insight \*\* YC to send this UI email to RS and JK for them to review, also talk with Todd Kipfer about data storage

#### **DISCUSSION OF POTENTIAL HOPA MOUNTAIN NSF GRANT**

---

The AT spent ~20 min talking with Bonnie Sachatello-Sawyer, the Executive Director Hopa Mountain, an NGO in Bozeman; Hopa Mountain (an NGO) who has recently petitioned NSF for a large climate change education grant. Bonnie spoke of her strong willingness to partner as appropriate with the GNLCC. Notes from that discussion follow: Discussion with Bonnie SS re: NSF grant proposal

- Bonnie started the Native Waters Program; doing broad scale education projects in MT, WY, ND, SD
- Working with MSU and many tribes and put together the NoRock CC education program
- Applied to NSF to become regional lead, looking for two years planning funds
- Numerous goals for educational goals for our region for broad climate use
- Hope for 5 regional workshops to build knowledge and increase CC literacy
  - Requested ~\$900k
- Many letters of support of proposal (that YC now has and can share with AT)
- Goal is to get NSF funding and work with NPS, USFS and others
- RFP they are responding to—develop regional partnerships that improve cc education
- Likely to fund about 20 across the country
  - After planning sessions PhI successful can apply for PhII more funding
- They hope to be competitive given partnerships
- Long term outcome?
  - Raise public awareness of what we do and do not know about CC and use to influence public behavior
  - Evaluation study
  - Cognitive science
- Decision is made in Sep
- Funding directly to Hopa and then sub to MSU, tribal colleges



- Work closely with tribal colleges mostly (and also tribal environmental associations); work with all reservations in MT and WY
- Wants to encourage this group to reach out and make connections; looking for good networking
- Greatly would like to work with and build on LCC work; want to be good partners in any way they can
- Columbia R Basin tends to be well organized—she can provide links and contacts; each of EPA regions have tribal groups that tend to be organized by large scale watersheds

## **JUNE 3 / 4 AGENDA**

---

**Great Northern LCC Advisory Team Retreat  
June 3-4, 2010, West Yellowstone, Montana  
FINAL DRAFT**

### 1. LCC purpose, need and functions

This discussion will help us understand what specific roles are needed and next steps

- Partners (who, needs, concerns)
- Vision (DOI, FWS and partner perspectives)
- Scope (fish, wildlife, and other resources)
- Framework/context (SHC, science and management interface and other)
- LCC network
- Other climate/landscape initiatives (how to bring together)

### 2. Advisory Team

- role and responsibility of each team member, especially LCC staff.
- Need for charter or MOU?
- Communications and ACCOUNTABILITY

### 3. FY10 Funding

- Update on recommended funding
- Process and assignments on funding agreements with partners
- Acquisition and “use” of deliverables
- Potential for additional funds

### 4. Governance Document: Fleshing out some of the details in anticipation of next steps.

### 5. Near- and Long-term Strategy

- FWS/DOI FY10 Performance Measures
- Setting LCC objectives (process, format, venue)
  - i. Process for assessment/integration of SWAPs priorities
  - ii. Temporal evolution and adjustment of priorities/objectives
- Workplan components, priorities, themes, communications plan, etc.
- Integrated I&M networking
- Capacity planning
  - i. USGS, NPS, FWS positions
  - ii. Needs? – Communications, spatial analysis, etc.
- Data platform development (i.e. FORT project)
  - i. Elements and applications
  - ii. Linkages/Integration (e.g., extant modules, WGA DSS)
  - iii. Hosting
  - iv. Oversight and management

### 6. Wrap-up – next steps, assignments, timelines

## **PARTIAL LIST OF ACRONYMS**

---

\*\* = action items

AT = Advisory Team

BLM = Bureau of Land Management

CC = climate change

CSC = USGS Climate Science Centers

DW = David Wood

FWS = Fish & Wildlife Service

GH = Greg Hughes

GW = Greg Watson

GS = Greg Servheen

I&M = Inventory & Monitoring

JK = Jeff Kershner

JM = Jim Morrison

NoRock = Northern Rockies

NPS = National Park Service

NSF = National Science Foundation

RS = Rick Sojda

SB = Scott Bischke, facilitator/note taker

SC = GNLCC Steering Committee

SW = Steve Waste

TO = Tom Olliff

USGS = United States Geological Service

YC = Yvette Converse

\* \* \*