

Appendix A. Remote Sensing Analysis and Classification of stream/river riparian and aquatic habitat.

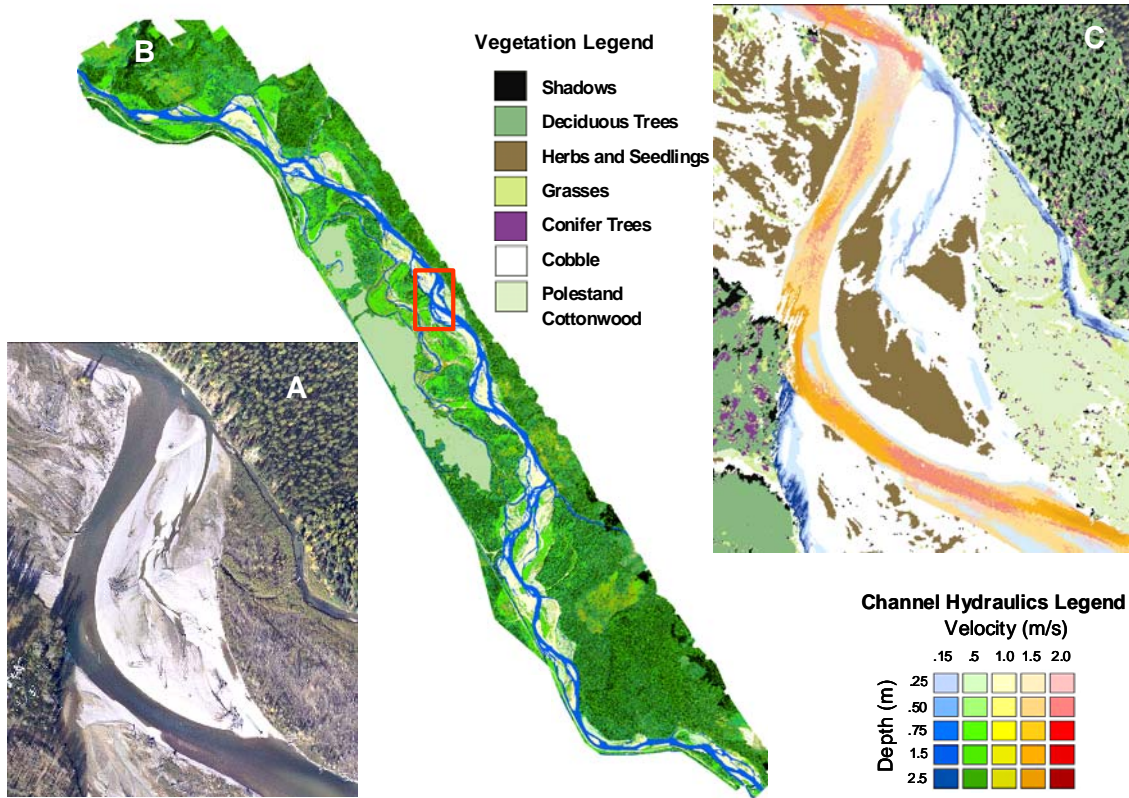


Image A is a georectified/referenced image composite of ultra-high resolution multispectral images from the FLBS image library of a river reach on the Middle Fork of the Flathead River. Image resolution is ~10cm.

Image B is a composite classification of a river reach on the Middle Fork of the Flathead River, (the red square corresponds to location of Image A. The classification legend as given provides information on riparian vegetative cover at a resolution of 1x1m.

Image C also corresponds with Image A and the red box in Image B in which aquatic channel hydraulics are given as a direct measure of stream channel habitat.