

# **Great Northern LCC Sage Steppe Partner Forum**

Steering Committee Update

May 2, 2013

# SSPF Leadership Team

Abbott, Tyler, USFWS  
Barnett, Jenny, USFWS  
Barrett, Kayla, USFWS  
Bowen, Zach, USGS  
Danwalter, Dan, TU  
Deibert, Pat, USFWS  
D'Erchia, Frank, USGS  
Elseroad, Adrien, CTUIR  
Finn, Sean, USFWS  
Garrett, Lisa, NPS  
Germino, Matt, USGS  
Griffiths, Tim, NRCS  
Hall, Sonia, TNC  
Hestbeck, Jay, USGS  
Hopkins, Todd, USFWS  
Johnson, Kevin, USFWS

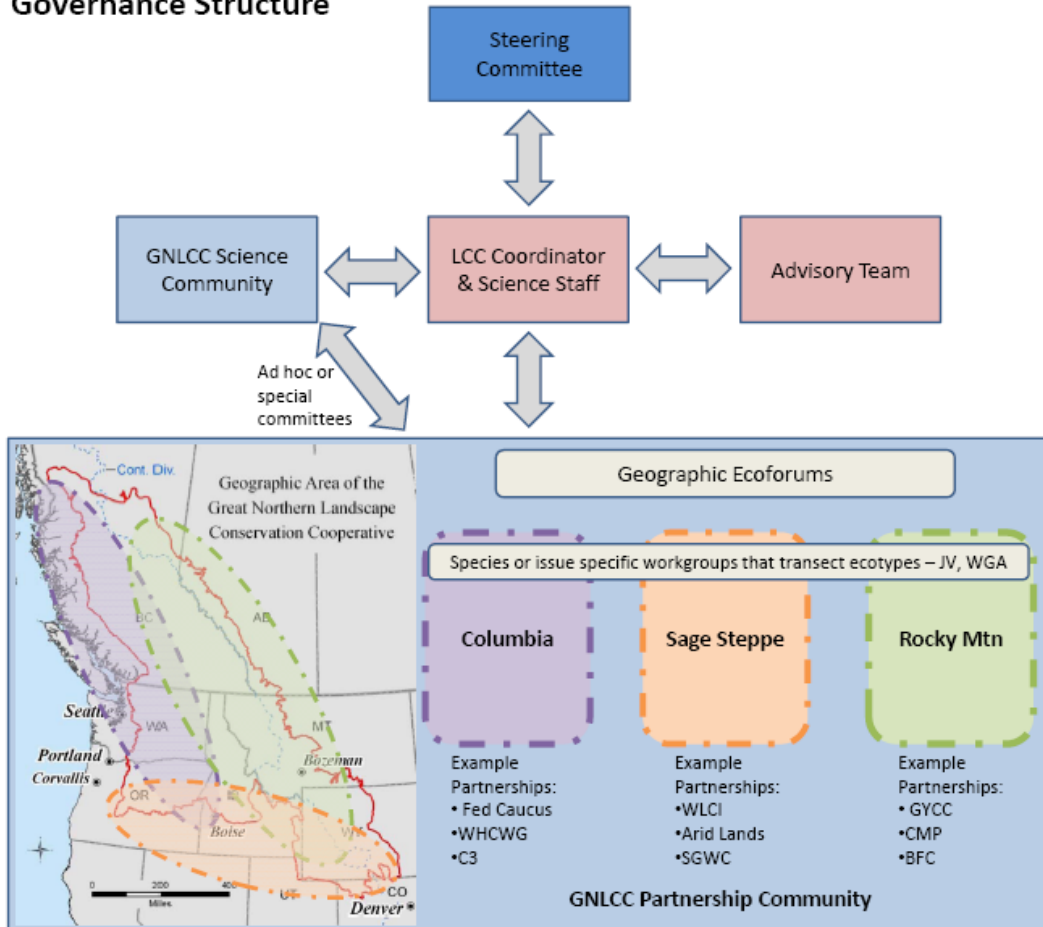
Keefe, Chris, BLM  
Kelly, LJ, BLM  
Knick, Steve, USGS  
Lor, Socheta, USFWS  
McCreeedy, Clark, USFWS  
Means, Robert, BLM  
Morisette, Jeff, USGS  
Munson, Johanna, BLM  
Naugle, Dave, UMT  
Nelson, Richard, USFWS  
Rice, John, BOR  
Saville, Dennis, BLM  
Sojda, Rick, USGS  
Warren, Jeff, USFWS  
Windsor, Michele, BLM  
Wood, David, BLM

# Introductory Comments

- Many entities working on sage grouse; states, WAFWA, LCC's, federal agencies, etc., mostly due to their strong commitment to sustainable ranching, harvest management, effects from energy development, and concern over the pending decision on listing scheduled for September 2015.
- The GNLCC Sage Steppe Partner Forum is working with existing initiatives like the Arid Lands Initiative and Wyoming Landscape Conservation Initiative.
- As Steve Torbit presented yesterday, the USFWS has announced an RFP for \$500K this FY, and hopefully continue the next two FYs, across four LCCs (GN, GB, SR, PPP LCCs) to support sage-grouse research.
- The USGS is assembling a sage-grouse research strategy for WAFWA due this spring.

# GN LCC Partner Forums

## Great Northern Landscape Conservation Cooperative Governance Structure



## FUNCTIONS

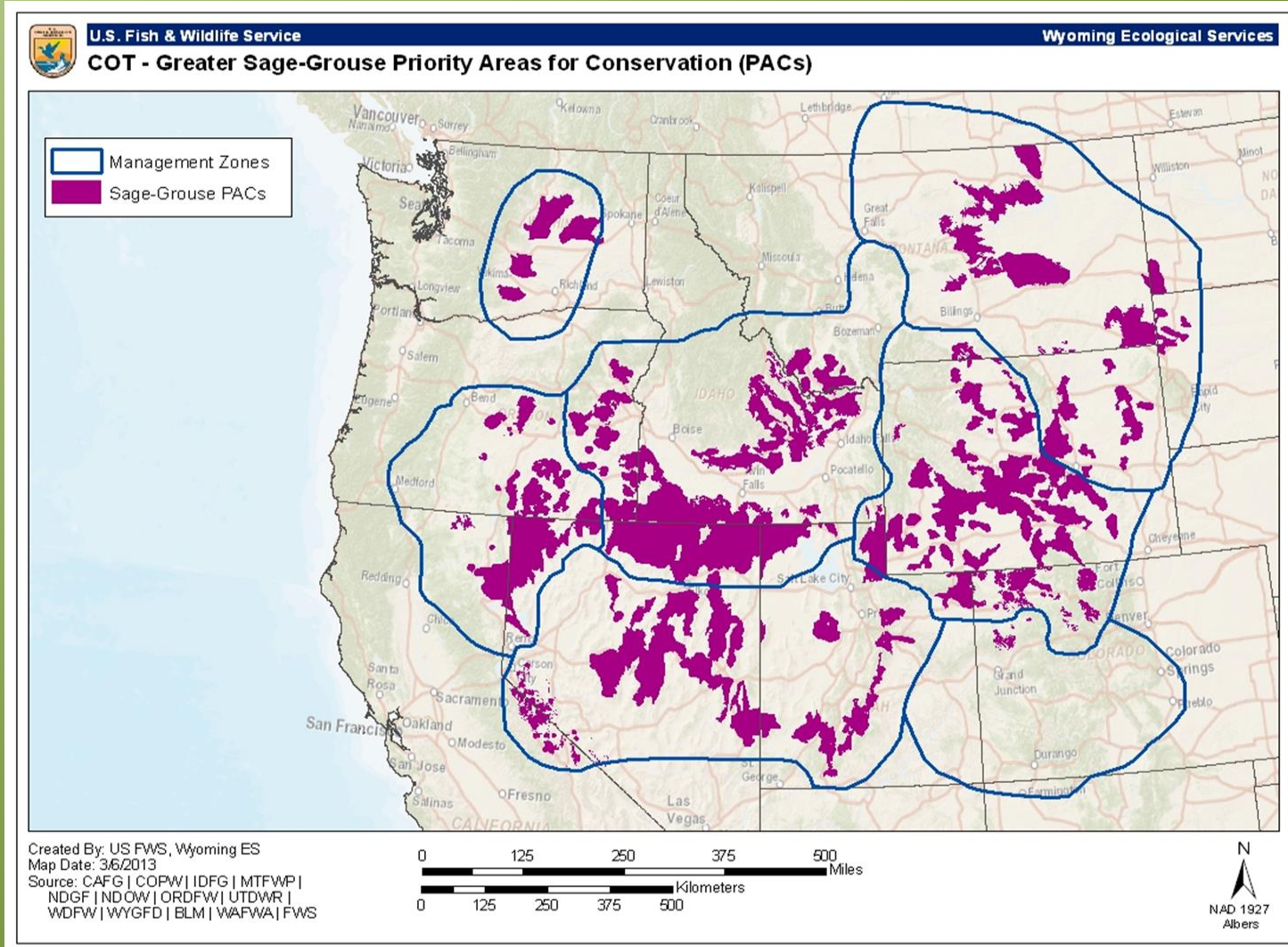
### *Steering Committee or Executive Council*

1. Set vision, Goals and Priorities for GNLCC
2. Provide direction to the GNLCC Coordinator and Staff
3. Approve Long-term Strategy and Operations
4. Approve GNLCC capacity needs
5. Approve funding for annual workplan including priority setting process

### *GNLCC Coordinator and Staff/ Advisory Team*

1. Promote and communicate long-term vision
2. Develop and write long-term strategy and annual workplans
3. Coordinate science and information needs
4. Develop and implement process for operations
5. Develop annual workplan recommendations
6. Develop and revise Long-term Strategy
7. Coordinate, communicate and provide outreach to Science and Partnership Communities

# Sage-Grouse Priority Areas for Conservation



# SSPF Activities

- Beginning in December 2011 the SSPF initiated a conference call with potential interested parties.
  - A leadership team was solicited to serve as representatives on the SSPF.
  - A survey was conducted to identify the top issues of the sage steppe community.
  - In September 2012 the SSPF sponsored a webinar on Sage grouse Conservation.
  - Initiated the development of a SSPF Workplan
- In January 2103 the SSPF hosted a webinar to discuss next steps attended by over 30 participants.
- The outcome of the discussion on next steps included the SPFF leadership team hosting a series of sage grouse related webinars:
  - On March 20, 2013 the SSPF hosted a webinar on Understanding Greater Sage Grouse Response to Wind Energy Development at the landscape Scale
- In addition, a recommendation was made that the SSPF develop a website that would serve to list ongoing activities, meetings of interest and a source for developing collaboration among interested partners.
  - A website is in development to accomplish this recommendation and will be presented now by Matt Heller, the GNLCC Information Systems Administrator and developer of the website.

# SSFP Website Demo

## Matt Heller

- *This website is designed to be a tool for Sage Steppe Partner Forum member collaboration. Highlights include:*
- *Partner contact information data entry*
- *Contact information listings*
- *News and update distribution*
- *Date/time tracking*
- *Document distribution*
- *Note: Currently in draft mode*