



PROGRESS REPORT: A Strategic Framework for the Great Northern Landscape Conservation Cooperative

Nina Chambers, Gary Tabor
September 2011

A Strategic Conservation Framework

PURPOSE

- (1) Clearly focus and prioritize efforts
- (2) Harness the efforts of partners to be more meaningful at the landscape scale



Conservation is:

The protection, preservation, management, or restoration of natural environments and the ecological communities that inhabit them.

Conservation includes the management of human use for public benefit and sustainable social and economic needs.

Adapted from The American Heritage® Science Dictionary Copyright © 2005

A Strategic Conservation Framework

Scope and Vision

Conservation Objectives

Situation Analysis



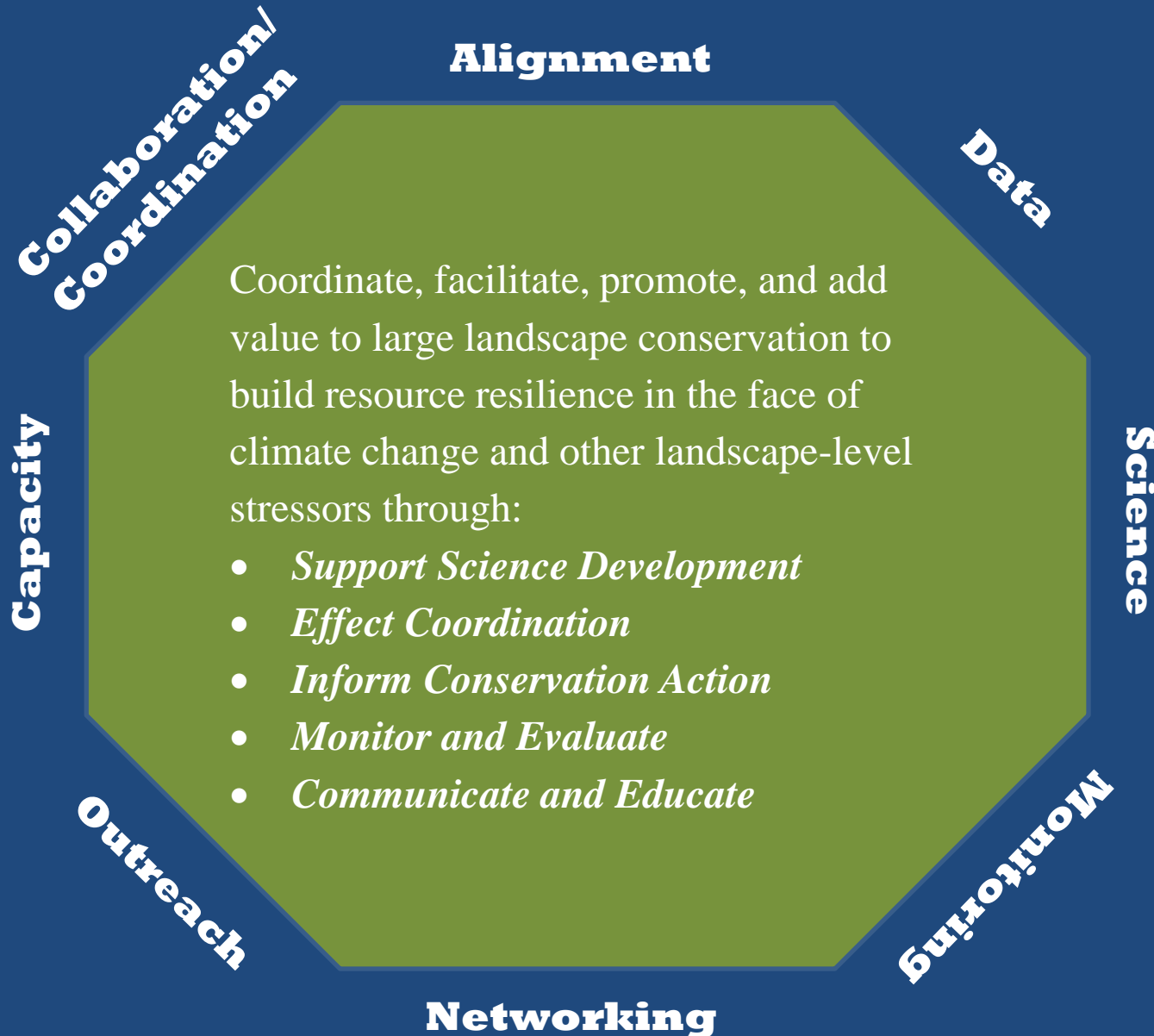
Sources of Information

- Interviews (7) with Advisory Team and (30) Steering Committee members
- ✓ Tribes (Umatilla, Yakima, and Salish-Kootenai), USFWS, NPS, BLM, USFS, USGS, WDFW, IDFW, WGFD, MFWP, NRCS, BOR, NOAA, EPA, WCS, HotR, Columbia Federal Caucus, and the Governments of Alberta and British Columbia

Sources of Information

- Interviews with (20) partner initiatives
 - ✓ PNAMP, C3, NPS I&M, USFWS JVs, Interagency Fire Teams, WLCI, ALI, WCL, CMP, Y2Y, GYCC, IGBC
- Background research on landscape conservation initiatives, priorities
- Literature review of (more than 50) documents
- Workshop with (55) federal land managers
 - ✓ USFWS, NPS, USFS, BLM

The Facets of the GNLCC



Scope and Vision



Why is the GNLCC important?

What will we accomplish?



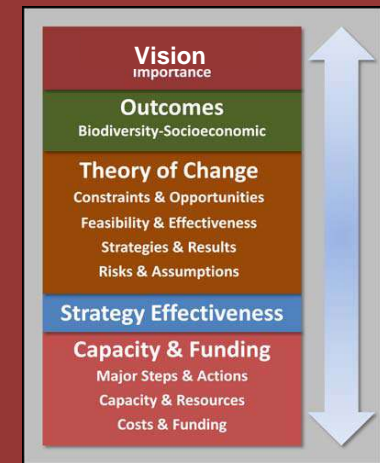
Why is the GNLCC important?

- Provide an integrative approach to large landscape conservation
- Link science and management
- Facilitate collaboration and coordination across boundaries



What will we accomplish?

- Share priorities and inform coordinated decisions across agencies
- Data portal—make information, data, tools accessible
- Science forums that link science and management
- Facilitation and coordination



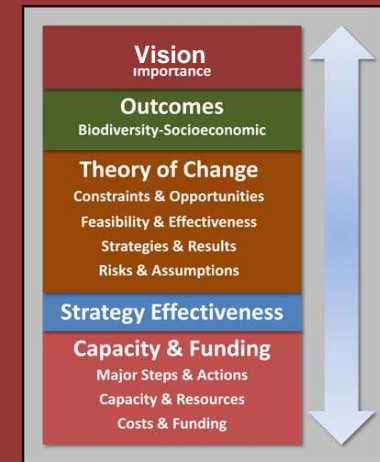
DRAFT Vision Statements

The Great Northern Landscape Conservation Cooperative envisions ...

Option 1: a legacy of landscape-level conservation and sustainable natural resources management.

Option 2: landscape-level ecological integrity and resource resilience through conservation and sustainable natural resources management.

Option 3: the conservation of land, water, and wildlife at the landscape level through collaborative science and management.



Conservation Objectives



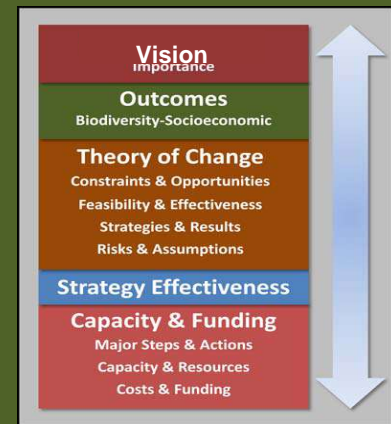
What is our focus?



What are our Priorities?

Respond to Landscape Stressors:

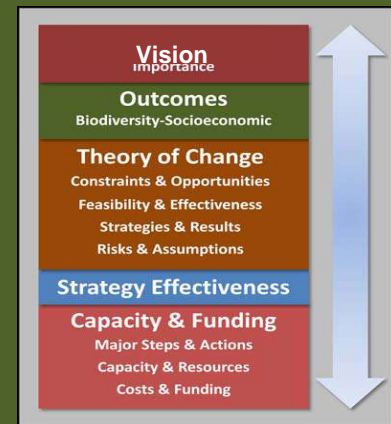
- Climate change
- Land uses (energy development)
- Invasive species



What are our Priorities?

Landscape Priority Issues:

- Connectivity, Fragmentation
- Water
- Forest/Shrubland/Grassland Health
- Land Use Impacts (energy)
- Human and Social Issues



DRAFT Flagship Priorities Sage-Steppe

Landscape Processes	Fire, land use/land cover, connectivity
Terrestrial Ecosystems	Sage-dominated shrub/grasslands
Aquatic Ecosystems	
Key Species	Greater sage grouse, antelope, mule deer
Cultural Values	

DRAFT Flagship Priorities Columbia Basin

Landscape Processes	Hydrography (water quantity, quality, and timing), connectivity
Terrestrial Ecosystems	Watershed uplands and floodplains
Aquatic Ecosystems	Riparian systems, wetlands
Key Species	Salmon, steelhead
Cultural Values	First foods (Salmon, mule deer among them)

DRAFT Flagship Priorities

Rocky Mountains

Landscape Processes	Fire and insects, land use/land cover, connectivity/wildlife corridors
Terrestrial Ecosystems	Alpine ecosystems, grasslands, woodlands
Aquatic Ecosystems	Riparian systems, lakes
Key Species	Cutthroat trout, whitebark pine, grizzly bear, trumpeter swan
Cultural Values	First foods

DRAFT Flagship Priorities SUMMARY

Landscape Processes	Fire, connectivity, stream flow/timing, land use change
Terrestrial Ecosystems	
Aquatic Ecosystems	
Key Species	
Cultural Values	

DRAFT Flagship Priorities SUMMARY

Landscape Processes	Fire, connectivity, stream flow/timing, land use change
Terrestrial Ecosystems	Floodplains, grasslands, sage shrubland, woodland, alpine
Aquatic Ecosystems	
Key Species	
Cultural Values	

DRAFT Flagship Priorities SUMMARY

Landscape Processes	Fire, connectivity, stream flow/timing, land use change
Terrestrial Ecosystems	Floodplains, grasslands, sage shrubland, woodland, alpine
Aquatic Ecosystems	Riparian systems, wetlands, lakes
Key Species	
Cultural Values	

DRAFT Flagship Priorities SUMMARY

Landscape Processes	Fire, connectivity, stream flow/timing, land use change
Terrestrial Ecosystems	Floodplains, grasslands, sage shrubland, woodland, alpine
Aquatic Ecosystems	Riparian systems, wetlands, lakes
Key Species	Greater sage grouse, salmon, steelhead, cutthroat trout, whitebark pine, grizzly bear, trumpeter swan
Cultural Values	

DRAFT Flagship Priorities SUMMARY

Landscape Processes	Fire, connectivity, stream flow/timing, land use change
Terrestrial Ecosystems	Floodplains, grasslands, sage shrubland, woodland, alpine
Aquatic Ecosystems	Riparian systems, wetlands, lakes
Key Species	Greater sage grouse, salmon, steelhead, cutthroat trout, whitebark pine, grizzly bear, trumpeter swan
Cultural Values	First foods, among them salmon, mule deer

Situation Analysis



What important political, socioeconomic or ecological trends are acting as constraints or present opportunities?

Given these external constraints and opportunities, what suite of strategies will be effective and are feasible?



Constraints and Opportunities

- Competition with existing efforts; concern about sustainable funding
- Participation and engagement
- Define scope; provide value



Constraints and Opportunities

- Identify a clear purpose and focus
- Demonstrate value to the partners and throughout the region
- Make wise choices and decisions



Constraints and Opportunities

- Provide strong leadership that encourages consistent engagement
 - Facilitate engagement of all partners
 - Encourage consistent engagement (attendance) of individuals to build trust
 - Have a clear structure and defined commitments
 - Ensure support from partners at the executive level



How Does the GNLCC Add Value?

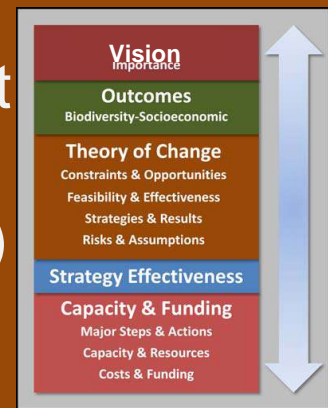
1. Integrating approaches to landscape conservation, focusing on shared, regional issues
2. Enhancing better linkage between science and management; providing information and tools
3. Facilitating collaboration and coordination among partners and initiatives in the region



Public Land Managers Workshop

Top Ten Priorities

1. Invasives (Driver)
2. Connectivity (Target)
3. Ecosystem integrity (Target)
3. Water quality/quantity (Target)
4. Energy development and transmission (Driver)
5. Inform management decisions, science-based decision making, accessible tools (Process)
6. Aquatic connectivity (Target)
7. Fragmentation/land use change and development (Driver)
7. Linking science to sociopolitical context (Process)
7. Data integration (Process)



Opportunities for Shared Action—Drivers

- Articulate agreed upon priority areas to intervene, prevent, or mitigate drivers
- Assess sensitivity and vulnerability to identify focal areas with regard to specific drivers
- Identify a process that capitalizes on existing efforts



Opportunities for Shared Action—Targets

- Identify and quantify sources of risk to water quality and identify appropriate management responses
- Analyze climate change scenarios to identify potential corridors or future corridor needs
- Prioritize restoration and protection opportunities to maintain or enhance connectivity (implemented through existing initiatives)



Opportunities for Shared Action—Process

- Start looking beyond unit borders to see what else is going on—cumulative impacts within larger context; context drives management decisions
- Give managers decision-making tools
- Land managers and agencies must work within and with their local communities



Partner Forums



A community of conservation-based practitioners connected by the landscape

Reality-check for GNLCC identified themes, identify what exists, look for gaps

Communicate GNLCC goal/purpose/vision, get local buy-in

Sage-Steppe Partner Forum

- Wyoming Landscape Conservation Initiative
- Arid Lands Initiative
- Washington Connected Landscapes
- NPS Columbia Basin Inventory and Monitoring Network
- Sage Grouse Initiative
- Path of the Pronghorn
- Others

Sage-Steppe Partner Forum

Opportunities/ Benefits	<ul style="list-style-type: none">• Share climate information at appropriate scale• Landscape trends• Fill science gaps• Coordinate efforts
Issues	<ul style="list-style-type: none">• Climate impacts on ecosystems• Connectivity, Landscape integrity• Sage ecosystems, Sage grouse monitoring• Cheatgrass• Fire• Policy• Coordination
Tangible Outcomes Desired	<ul style="list-style-type: none">• Communication• Science results applied to management• Coordinate management strategies• Leverage funding
Format	<ul style="list-style-type: none">• Mix of face-to-face meetings and webinars• Science conference, science webinars• Social networking

Columbia Basin Partner Forum

- Washington Connected Landscapes
- Pacific Northwest Aquatic Monitoring Partnership
- Columbia River Tribal Fisheries Commission
- Climate Change Collaboration
- Columbia Basin Fish and Wildlife
- Yakima Watershed and River Systems Management Project
- Others

Columbia Basin Partner Forum

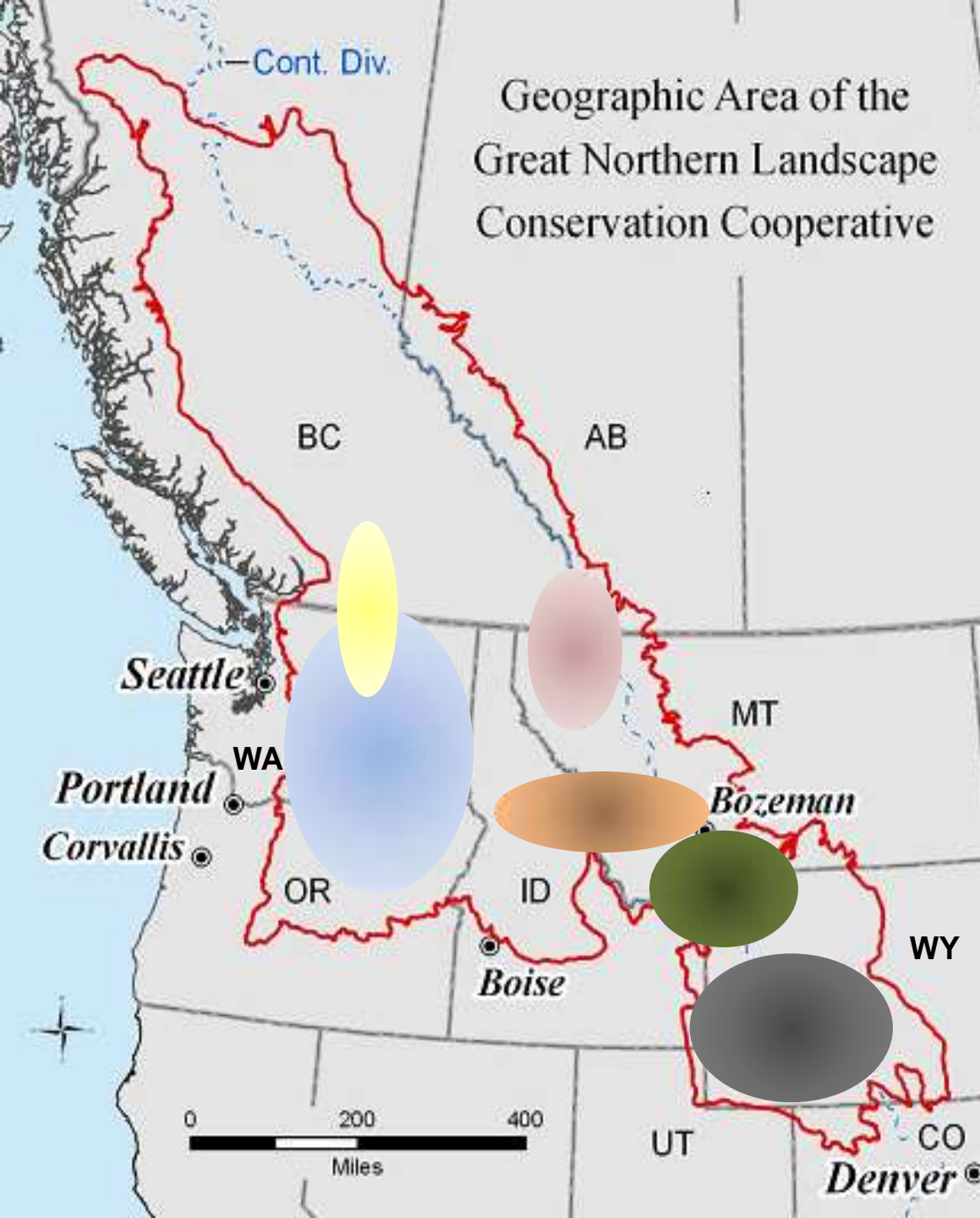
Opportunities/ Benefits	<ul style="list-style-type: none">• Amplify impacts of initiatives• Share information• Network
Issues	<ul style="list-style-type: none">• Water• Fisheries• Agriculture
Tangible Outcomes Desired	<ul style="list-style-type: none">• Decision tools to influence public and private decisions• Share science• Increase connections
Format	<ul style="list-style-type: none">• Regional conference• Science conference• Web site with information accessible

Rocky Mountain Partner Forum

- Greater Yellowstone Coordinating Council
- Blackfoot Challenge
- Washington Connected Landscapes
- Crown Managers Partnership
- Southwest Crown Partnership
- WGA Wildlife Initiative
- Heart of the Rockies
- Interagency Grizzly Bear Committee
- Others

Rocky Mountain Partner Forum

Opportunities/ Benefits	<ul style="list-style-type: none">• Integrate work of many initiatives to create greater meaning and impact• Goal alignment, shared vision, cross-boundary collaboration• Link fire community to landscape initiatives
Issues	<ul style="list-style-type: none">• Connectivity, wildlife corridors• Integrate science and management• Landscape context, cross-boundary conservation• Access to data, data standardization
Tangible Outcomes Desired	<ul style="list-style-type: none">• Networking, relationships• Quality data, data portal• Lessons learned• Integrated monitoring• Adaptive management
Format	<ul style="list-style-type: none">• Mix of face-to-face meetings and webinars• Multiple formats• Field trips



Some Cooperative Landscape Efforts within the GNLCC:

- Greater Yellowstone Ecosystem
- High Divide
- Crown of the Continent
- Wyoming Basin
- Columbia Basin/Columbia Plateau
- Okanagan Valley

Next Steps



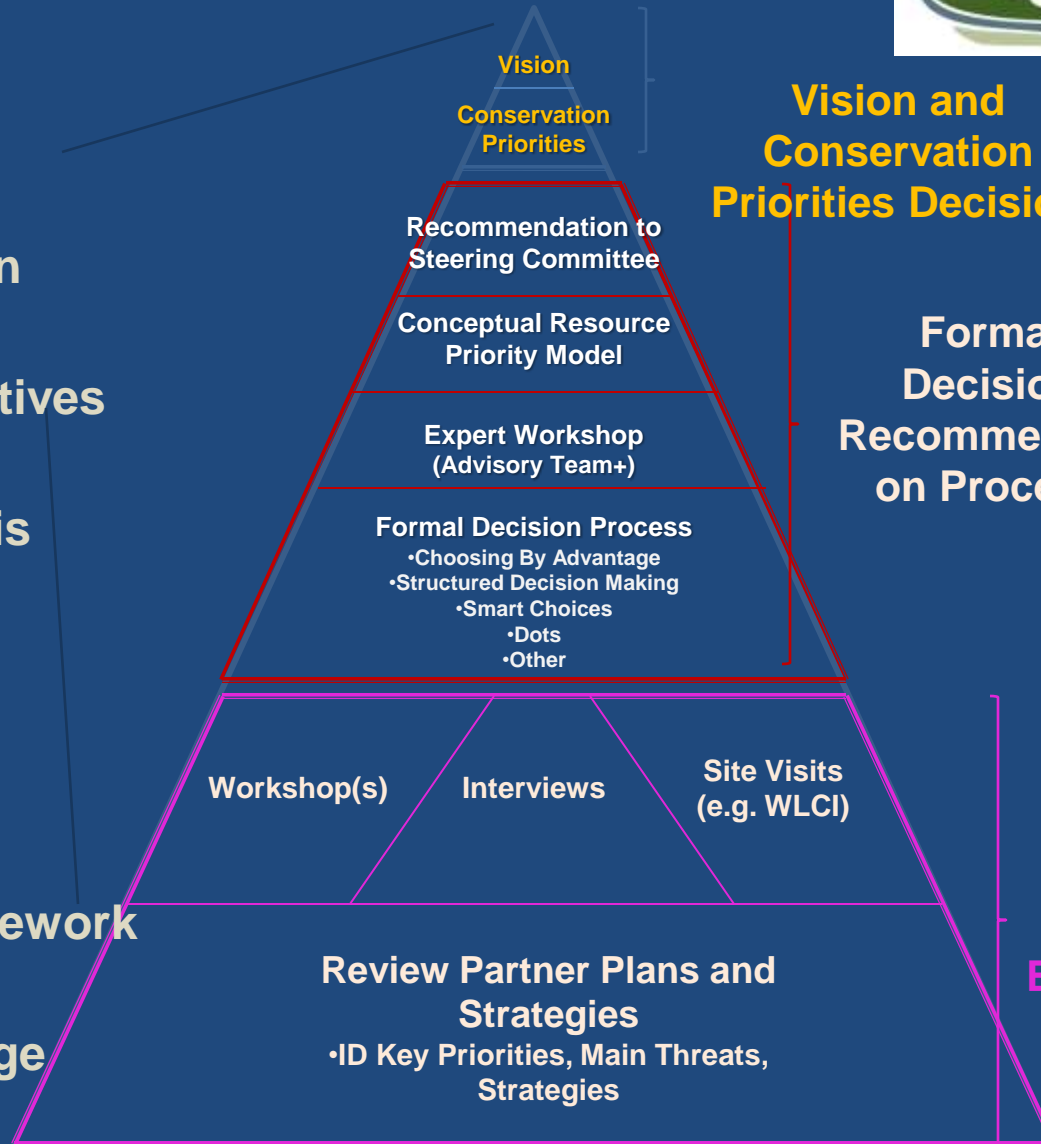
- Advisory Team+—workshops to develop recommendations
- Partner Forums kick off—form leadership teams, gap analysis to focus priorities

Strategic Framework Process

Process Pyramid (To determine Vision and Conservation Priorities)



- PROCESS STEPS**
1. Scoping & Vision
 2. Conservation Objectives
 3. Situation Analysis
 4. Strategies
 5. Measures
 6. Implementation Framework
 7. Resource Leverage



Vision and Conservation Priorities Decision

Formal Decision Recommendation on Process

Scoping and Background